



DigiLinX™ Application Note

Installation instructions for DigiLinX HAI Lighting Driver



The following equipment is required to integrate the HAI lighting system with the DigiLinX control system.

DigiLinX: Either the ControLinX (CL100) or MediaLinX Pro (MLA4000)

HAI: HAI Controller with RS232 interface

Step 1 Copy Driver File

Copy the driver file 'HAI.lua' to the drivers directory (Dealer Setup 2.0 or later required). If you installed Dealer Setup in the default directory then the drivers directory will be:

c:\Program Files\DigilinX Dealer Setup\Drivers

Note, if this directory does not exist, then you will need to create it

The HAI controller requires that DigiLinX specify the Security Code in order to gain remote access to the system.

The security code needs to be entered in the driver file. For your specific installation the driver file will need to be edited using a text editor such as Notepad.

Look for the following text in the driver file and enter your HAI security code. The HAI security code is set in the HAI system, please refer to your HAI documentation for more information on setting the security code within the HAI system.

--
--
--

Security Code for accessing the HAI Controller is defined here
eventually this will be provided from DealerSetup,
but for the time being we define it here

local SecurityCode = { 1, 1, 1, 1 }

-----DO NOT CHANGE ANYTHING BELOW THIS LINE-----

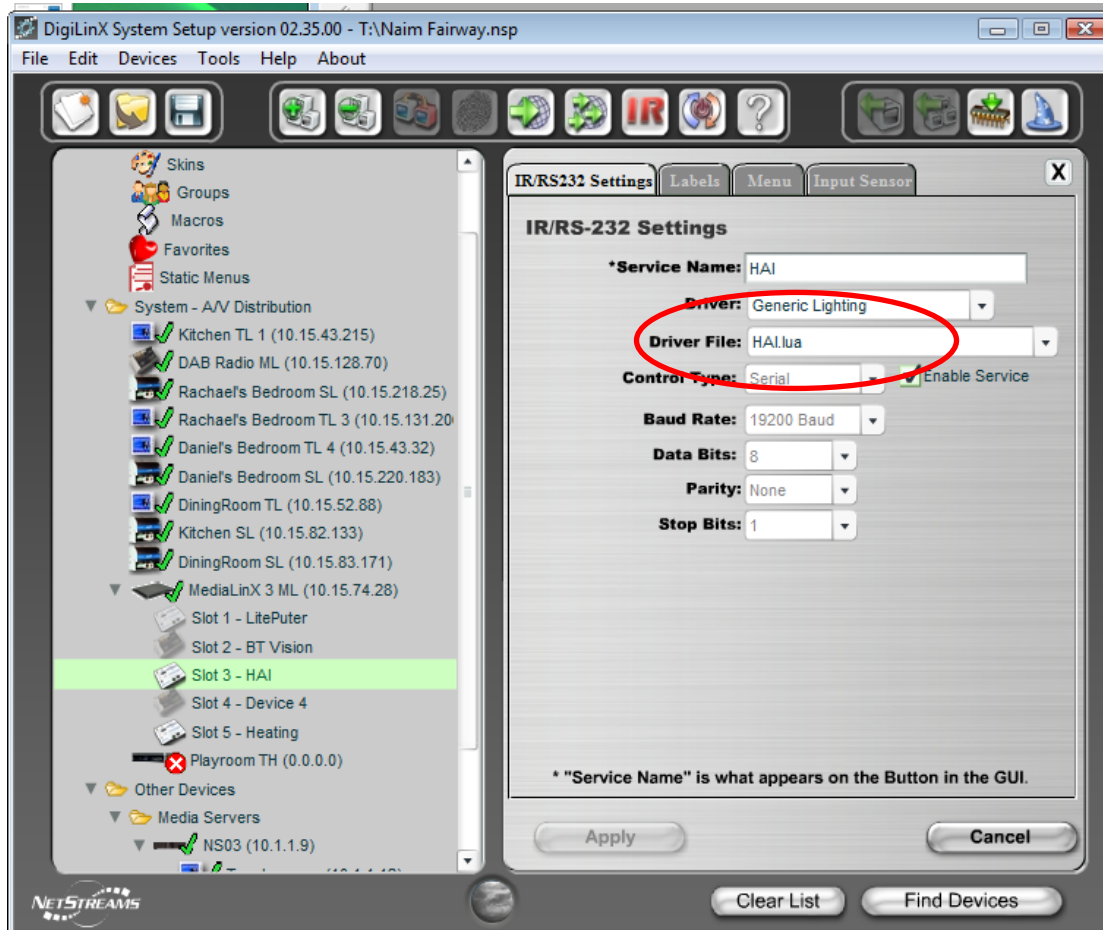


DigiLinX™ Application Note

Step 2 Configure ControlLinX

IR/RS232 Settings

Configure ControlLinX as a lighting service with a Generic Lighting driver
From the driver File selection list, select "HAI.lua"



Application Note: 030065

NetStreams, DigiLinX, TouchLinX and ControlLinX are Trademarks of NetStreams LLC.

All rights reserved. Copyright © 2009 NetStreams.

main +1 512.977-9393 / fax +1 512.977.9398 3600 W. Parmer Lane, Ste. 100; Austin, TX 78727



DigiLinX™ Application Note

U.<ID>.LEVEL.<percent> UNIT Set LEVEL percent

Sets specified UNIT to percentage level (0-100)

There is NO feedback for the LED on this button.

<ID> UNIT number

<percent> Percentage LEVEL (0-100)

Example

U.1.LEVEL.50 -- UNIT 1 Level 50%

U.2.LEVEL.25 -- UNIT 2 Level 25%

U.<ID>.RAMP.<percent>.<time> UNIT RAMP to percent over TIME

RAMPS specified UNIT to percentage level (0-100),
over TIME period

There is NO feedback for the LED on this button.

<ID> UNIT number

<percent> Percentage LEVEL (0-100)

<time> Time for RAMP

Example

U.1.RAMP.50.10s -- UNIT 1 Ramp to 50% over 10 seconds

U.2.RAMP.25.50 -- UNIT 2 Level 25% over 50 seconds

R.<ID>.<Action> ROOM (HLC) control

<ID> Unit (HLC Room)

<Action> Action

ON

OFF

A-L recalls Scenes

Example

R.2.ON

R.2.A

R.2.L

UPB.<ID>.<Action> UPB Control

<ID> UPB Link

<Action> Action

ON

OFF

SET

CL.<ID>.<Action> CentraLite Scene Recall

<ID> CentraLite Scene

<Action> Action

ON

OFF

RA.<ID>.<Action> RadioRa Phantom Button

<ID> RadioRa Button

<Action> Action

ON

OFF



DigiLinX™ Application Note

LV.<ID>.<Action>

<ID>

<Action>

Leviton

Leviton Scene

Action

ON

OFF

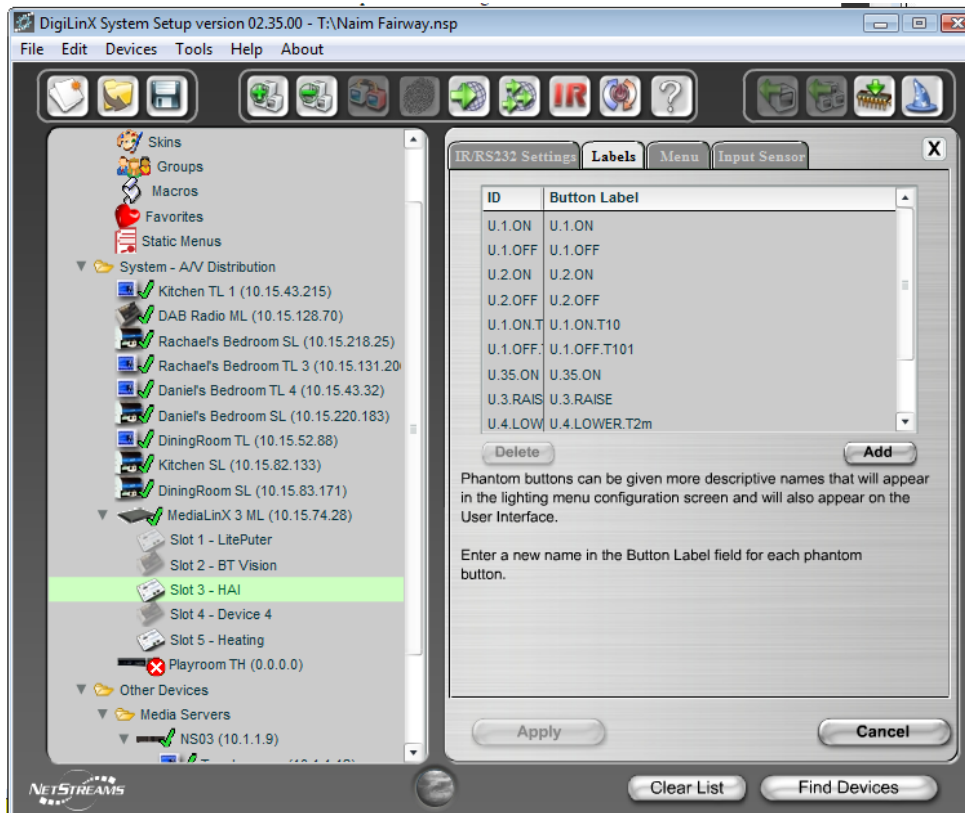
SET

MACRO.<ID>

<ID>

Execute MACRO

Macro number



Application Note: 030065

NetStreams, DigiLinX, TouchLinX and ControlinX are Trademarks of NetStreams LLC.

All rights reserved. Copyright © 2009 NetStreams.

main +1 512.977-9393 / fax +1 512.977.9398 3600 W. Parmer Lane, Ste. 100; Austin, TX 78727



DigiLinX™ Application Note

Menu

Menu tab builds the menus that appear on the TouchLinX when a room is selected.



Application Note: 030065

NetStreams, DigiLinX, TouchLinX and ControlinX are Trademarks of NetStreams LLC.

All rights reserved. Copyright © 2009 NetStreams.

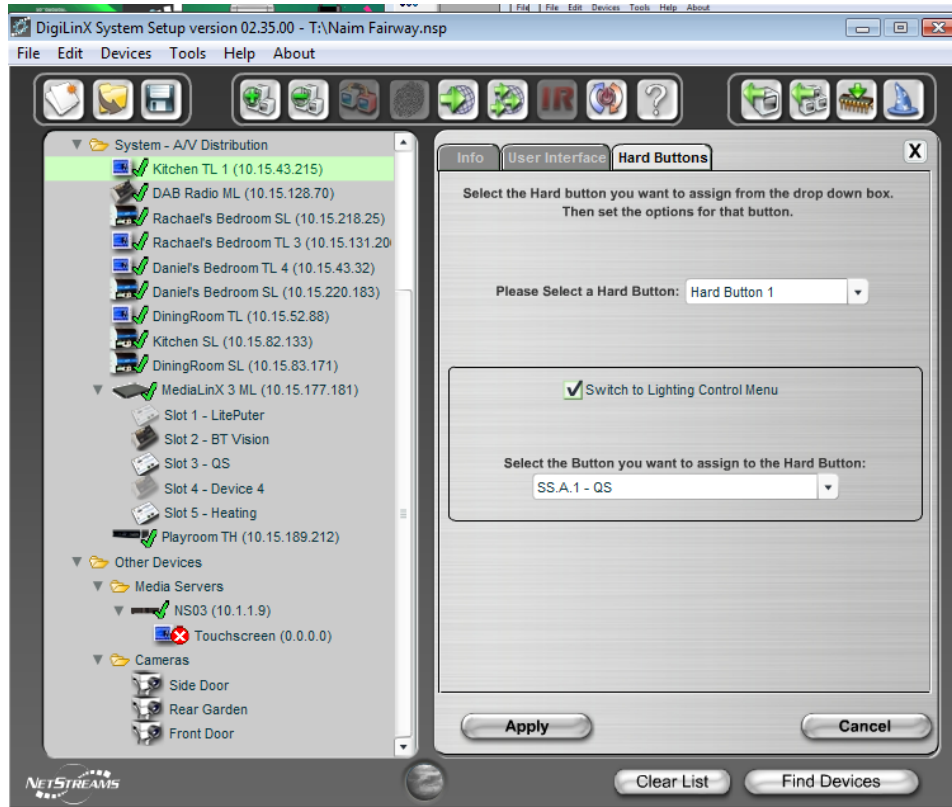
main +1 512.977-9393 / fax +1 512.977.9398 3600 W. Parmer Lane, Ste. 100; Austin, TX 78727



DigiLinX™ Application Note

TouchLinX Hard Buttons

If desired, the top hard button on the TouchLinX can be assigned to lighting function..



Step 3

Apply changes to project, and then upload settings to the system. This uploads the driver file and configuration settings.