

DIGILINX™ Technical Bulletin

Installing a *StreamNet*™ Card into a Polk Speaker

With the addition of the *StreamNet* TCP/IP interface card, Polk speakers become addressable nodes on a *NetStreams DigiLinX* IP network. This technical bulletin shows you how to install a *StreamNet* card into Polk LC265i-IP or LC80i-IP speakers.

Introduction

The procedures to install a *StreamNet* card into a Polk LC265i-IP or LC80i-IP speaker are identical. The procedures in this bulletin use a ceiling Polk LC80i-IP speaker as the example.

Requirements

- *StreamNet* Card - Part Number SN1000,
- Electrostatic discharge strap,
- Phillips screw driver,
- Needle-nosed pliers,
- Zip tie, and
- small knife or scissors.

Procedures for Installing into a Polk Speaker

The following procedures show you how to install a *StreamNet* card into an LC80i-IP speaker:

1. Ensure you are wearing an electrostatic discharge strap before working on any of the following equipment.
2. Cut the zip tie to release the ribbon cable (see Figure 1).



The
IP-Based
Distributed
Entertainment
Company.

Products Affected:

DigiLinX



Figure 1 Cutting the zip tie

3. Remove tweeter wires from the amplifier carefully. See Figure 2.

NOTE: The tweeter connectors are size-coordinated so that you can't plug a connector into the wrong connection. Pull on the connector and not on the wire or you may accidentally pull the wire out of the connector.



Figure 2 Removing tweeter wires

4. Remove the four screws from the LC80i amplifier chassis (see Figure 3).

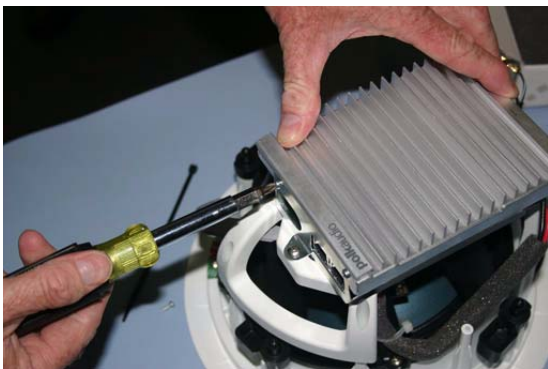


Figure 3 Remove chassis screws

5. Lift the heatsink off the amplifier and pull back gently, but not too far.

6. Disconnect the ribbon cable connector (see Figure 4).

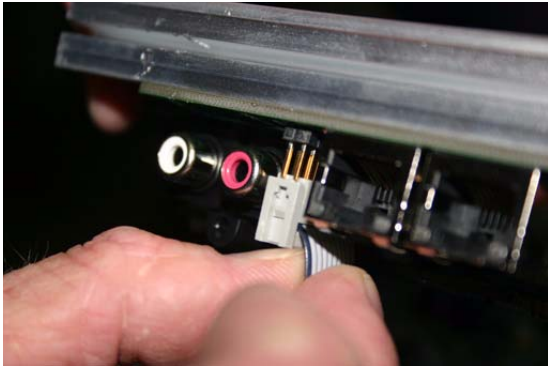


Figure 4 Disconnect the ribbon cable connector.

7. Remove the screws from the standoff posts on the exposed card (see Figure 5).

NOTE: Use the needle-nosed pliers to stabilize the posts.

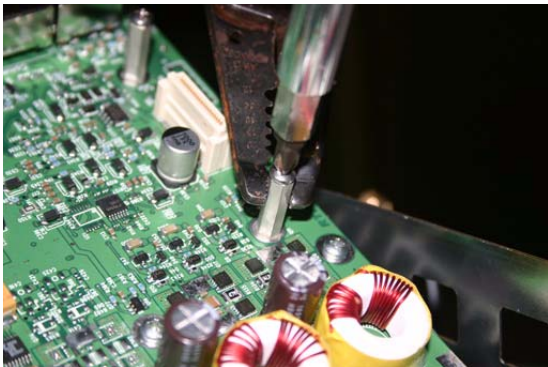


Figure 5 Removing screws from standoff posts.

8. Insert the connector on the *StreamNet* card into the connector on the amplifier card (see Figure 6).

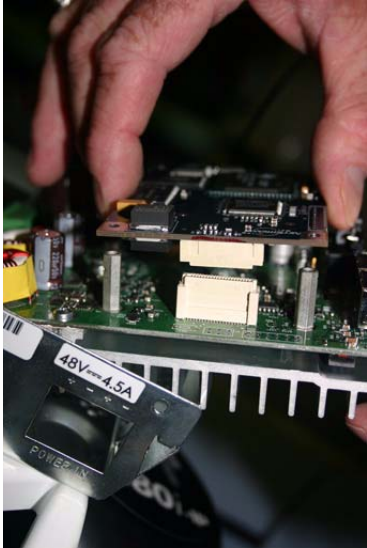


Figure 6 Inserting the *StreamNet* card.

9. Press the card firmly but carefully onto the plastic standoff posts (see Figure 7).

NOTE: The card is seated when you hear it snap into place.



Figure 7 Pressing card onto standoff posts

10. Screw the *StreamNet* card into place using the screws from the standoff posts (see Figure 8).

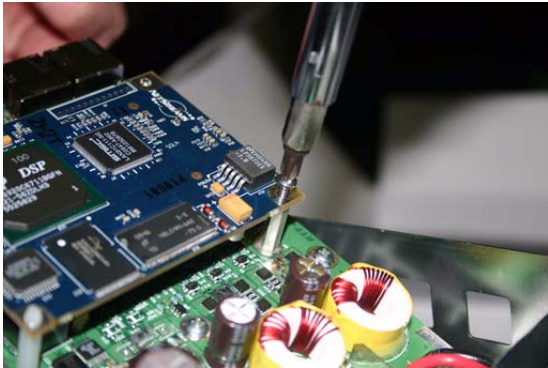


Figure 8 Screw the StreamNet card onto the standoff posts

11. Pull the ribbon cable up to give more room (see Figure 9).



Figure 9 Pull the ribbon cable up

12. Ensure the ribbon connector pin 1 is on pin 1 (the top left pin) of the amplifier board connector. See Figure 10.

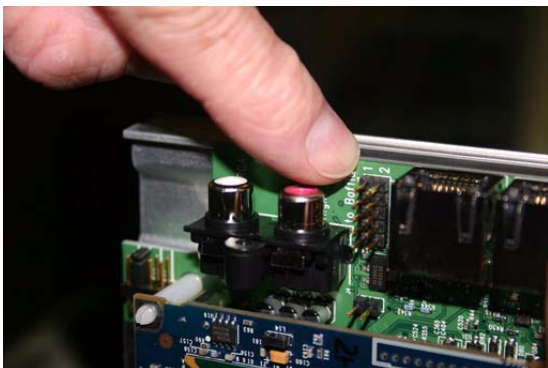
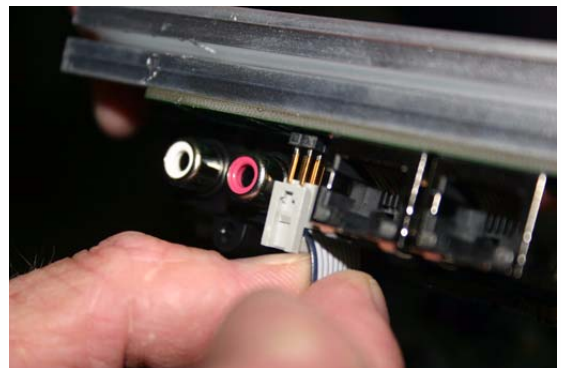


Figure 10 Connecting ribbon cable



13. Replace the screws on the amplifier chassis (see Figure 11).

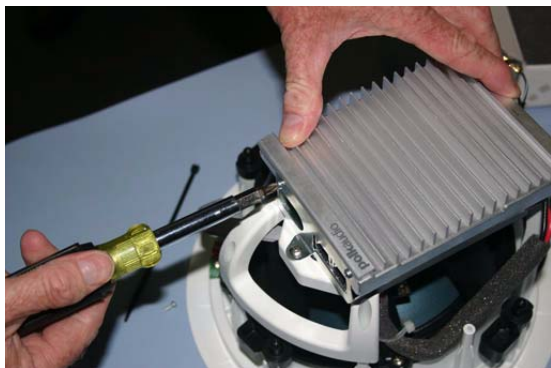


Figure 11 Replace the screws on the amplifier chassis

14. Press the connector on the ribbon cable back into place on the small circuit card located on the speaker (see Figure 12).



Figure 12 Press the ribbon connector back onto circuit card

15. Re-tie the ribbon cable (see Figure 13).

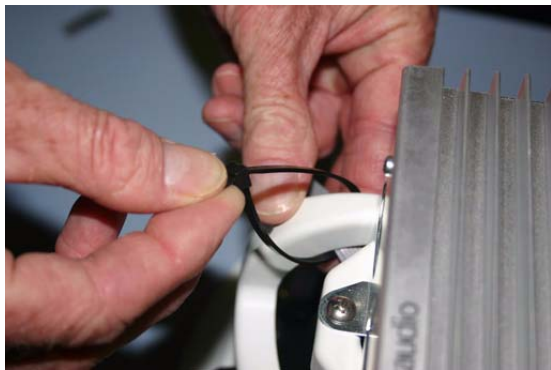


Figure 13 Using a zip tie to tie down the ribbon cable

16. Re-connect the speaker wire (see Figure 14).



Figure 14 Attaching tweeter wires

The speakers are now ready to be configured and installed.

Configuring Polk Speakers

To configure Polk speakers, refer to the Polk Audio addendum that supersedes the LCi-IP Owner's Manual.

IMPORTANT! ONLY use the the Hookup 1a configuration.

Use the following settings:

Left speaker switches:

- Switch 3 - Off
- Switch 2 - On
- Switch 1 - Off

Right speaker switches:

- Switch 3 - On
- Switch 2 - On
- Switch 1 - On