

# ClearOne®

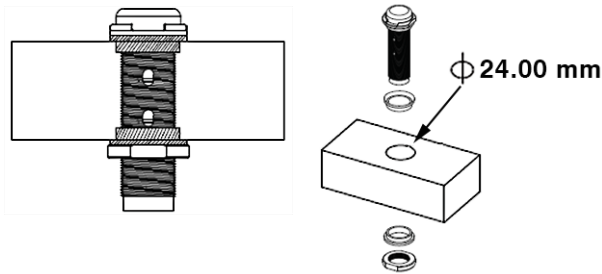
## Button Microphones Unidirectional and Omnidirectional

### Quick Start Guide

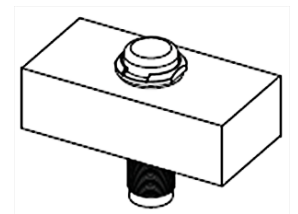
These button microphones are designed to mount to a ceiling or table top, and with or without shock isolation.

#### With Shock Isolation

Hole diameter: 24.00 mm

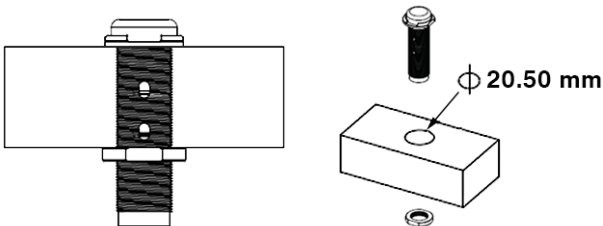


Install the microphone so the notch in the bezel faces the source of the sound.

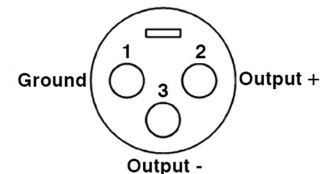


#### Without Shock Isolation

Hole diameter: 20.50 mm



#### Wiring



#### Part Numbers

910-103-164-01: Unidirectional Button Mic - Black

910-103-162-01: Omnidirectional Button Mic - Black

### Additional Information

Product datasheet and European compliance information are available on the ClearOne website ([www.clearone.com](http://www.clearone.com)) under Support & Training > Resource Library.

### ClearOne Contacts

#### Headquarters

5225 Wiley Post Way  
Suite 500  
Salt Lake City, UT 84116

#### Sales

Tel: 801.975.7200  
e-mail: [sales@clearone.com](mailto:sales@clearone.com)

#### US & Canada

Tel: 801.975.7200  
Fax: 801.303.5711

#### Technical Support

Tel: 801.974.3760  
e-mail: [tech.support@clearone.com](mailto:tech.support@clearone.com)

#### International

Tel: +801.974.3621  
e-mail: [global@clearone.com](mailto:global@clearone.com)