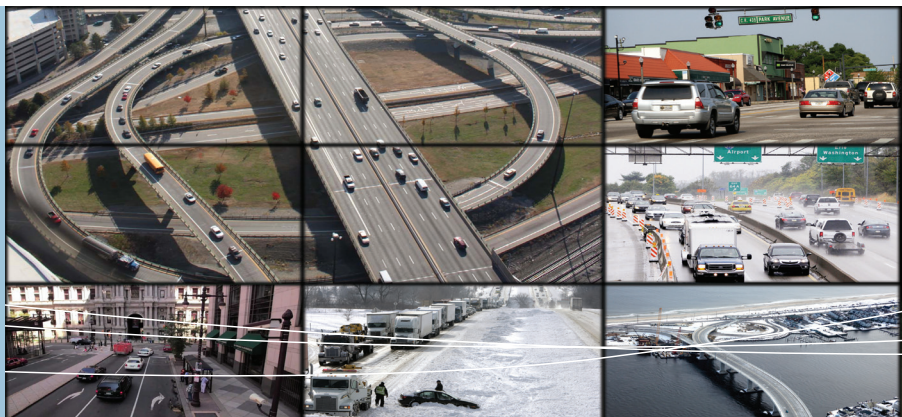


PANORAMA software license for VIEW Pro Encoders and Decoders enable dynamic zone composition to be sent to multiple streams/zones, or allows multiple streams to be composed for a single display, including multi-display video walls.

Obtaining a one time license per unit provides for the most cost-effective use of your encoders and decoders.



### Applications

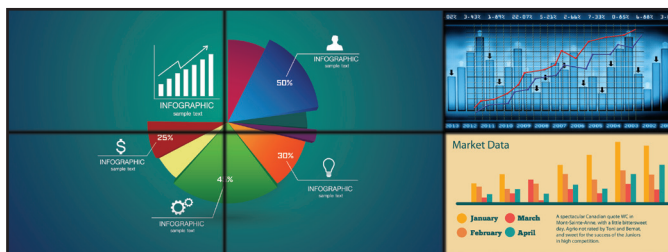
- + Command and control displays
- + Video walls
- + Multi-imaging
- + Advanced digital signage
- + Sports multi-views
- + Distance learning
- + Classrooms

### Features

- + Works with all licensed VIEW Pro Encoders and Decoders
- + Combine multiple source images for single display output
- + Combine different source types or formats into single display output
- + Maintain aspect ratio or crop image
- + Display portion of video for multi-displays or video wall applications



VIEW Pro Composition "Quad" configuration (1 display)



VIEW Pro 2x3 Video Wall Composition (6 displays)



VIEW Pro Composition "Six (5+1)" configuration (1 display)



VIEW Pro 2x2 Video Wall Composition (4 displays)

### Functional Specifications

MAXIMUM RESOLUTION  
1920x1200

FRAME RATES  
24, 30, 60

PANORAMA LICENSE FOR ENCODER  
910-0000-004

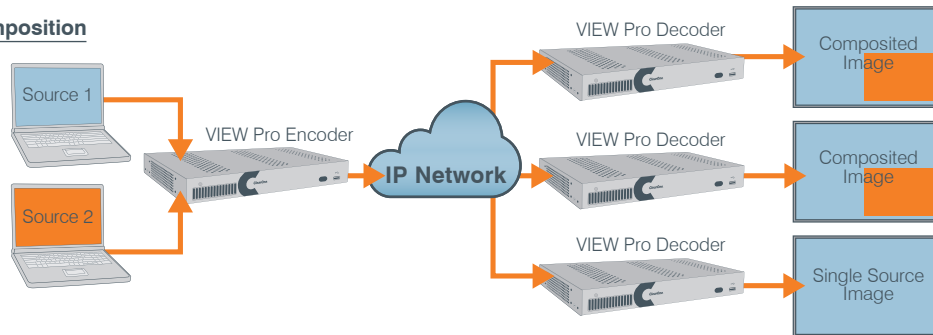
PANORAMA LICENSE FOR DECODER  
910-0001-004

#### APPLICABLE PRODUCTS

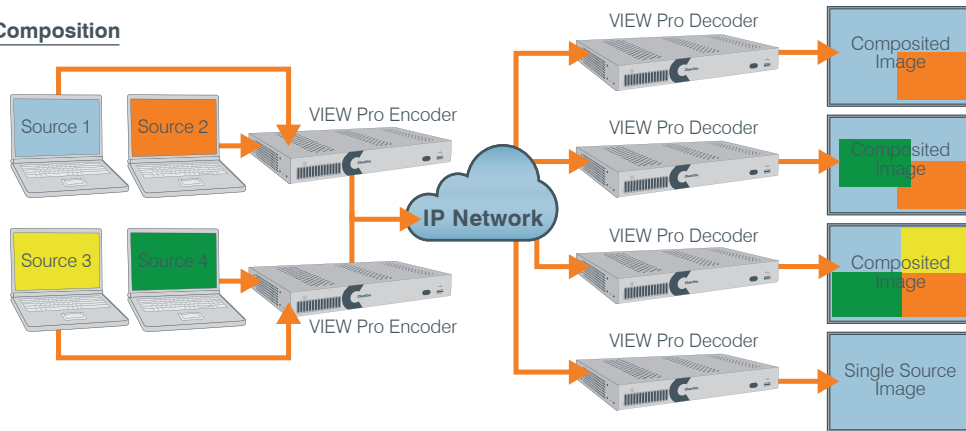
VIEW Pro Encoder E110-4K: 910-0000-007  
VIEW Pro Decoder D110-4K: 910-0003-003  
VIEW Pro Encoder E110: 910-0000-006  
VIEW Pro Encoder E120: 910-0000-001  
VIEW Pro Decoder D110: 910-0001-001  
VIEW Pro Decoder D210: 910-0003-001

## VIEW Pro Composition/Video Wall License - Diagrams

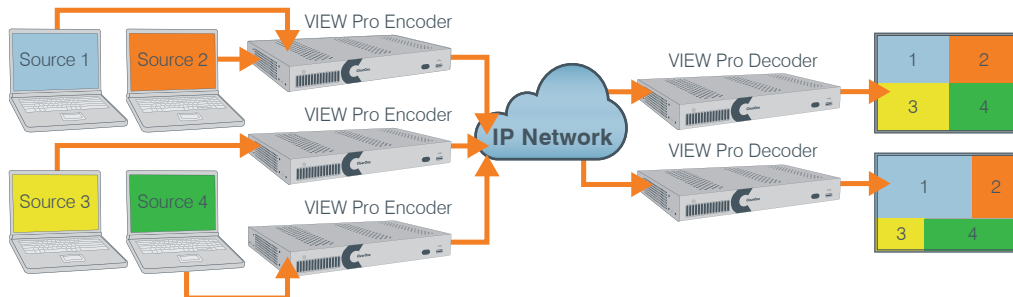
### Encoder Composition



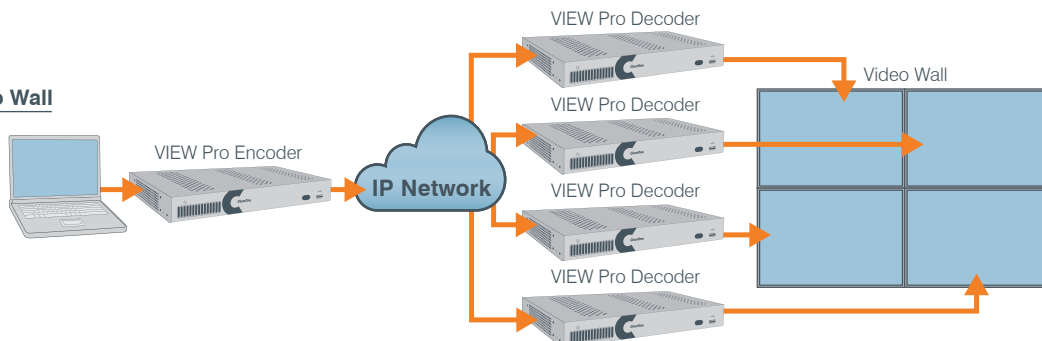
### Decoder Composition



### Combined Composition



### Video Wall



## ClearOne Contacts

**Headquarters**  
5225 Wiley Post Way  
Suite 500  
Salt Lake City, UT 84116

**US & Canada**  
Tel: 801.975.7200  
TollFree: 800.945.7730  
Fax: 801.303.5711

**International**  
Tel: +1.801.975.7200  
global@clearone.com

**Sales**  
Tel: 801.975.7200  
sales@clearone.com

**TechSales**  
Tel: 801.974.3760  
techsales@clearone.com

**TechSupport**  
Tel: 801.974.3760  
tech.support@clearone.com