

ClearOne Aura™

Quick-Start Guide



VERSA™ PRO 150
COMPLETE SOLUTION

CONTACT INFORMATION

Headquarters

5225 Wiley Post Way
Suite 500
Salt Lake City, UT 84116
US: +1.801.975.7200
International: +1.801.975.7200

Aura Sales

US: +1.888.HEY.AURA
International: +1.801.975.7200
aurasales@clearone.com

Aura Tech Support

US: +1.888.HEY.AURA
International: +1.801.975.7200
auratechsupport@clearone.com

NOTICES

© 2021 ClearOne, Inc. All rights reserved.

Information in this document is subject to change without notice.

Document: QSG-0077-002v1.1 February 2021

COMPONENTS INCLUDED

The Versa Pro 150 includes the UNITE® 150 PTZ Camera, the CONVERGE® Huddle DSP Mixer, a Ceiling Mic Array, and a free COLLABORATE® Space lifetime subscription.

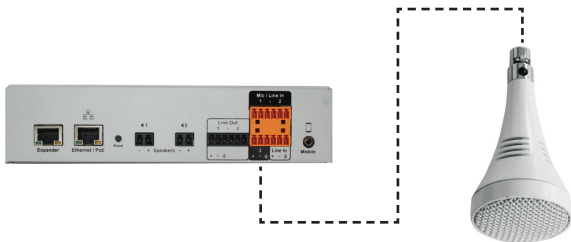
	<p>AUR-2100-004</p> <p>UNITE 150 PTZ camera, power supply, USB cable, and camera remote control</p>
	<p>AUR-3200-701</p> <p>(1) CONVERGE Huddle (2-4) Terminal Block Connectors, (5) USB 3.0 cable (6) TRRS cable (7) Mini COMBICON plug connectors (8-9) Phillips pan-head screws, (10) Mounting ears kit</p>
	<p>AUR-001-013-W</p> <p>Ceiling Microphone Array, cables</p>
	<p>Free COLLABORATE Space lifetime subscription</p>

SET UP YOUR PRODUCT

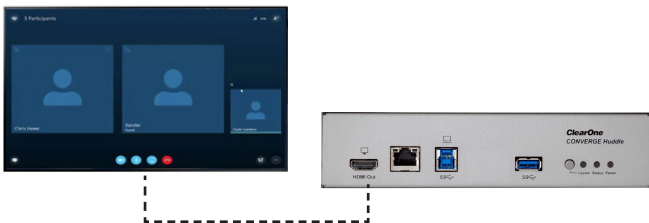
1. Connect the UNITE 150 camera to a USB 3.0 port on the CONVERGE Huddle.



2. Connect the Ceiling Mic Array to a Mic/Line input on the CONVERGE Huddle.



3. Connect the display to the HDMI output on the CONVERGE Huddle.



4. Connect the camera to a power supply. Connect the CONVERGE Huddle to a PoE power injector (Midspan), or PoE Ethernet Network Switch (Endspan).



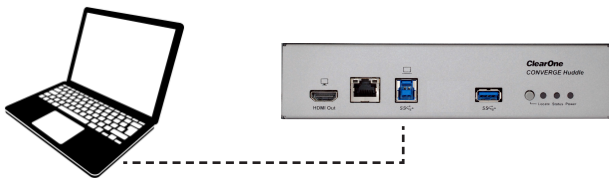
Versa Pro 150

- To cast a laptop screen onto a display via USB 3.0, install the DisplayLink driver (one time installation) onto the laptop. You can download the driver from:

www.displaylink.com/downloads

Note: If a Windows 10 laptop comes with the DisplayLink driver pre-installed, it does not need to be installed separately. The Versa hub has been tested with DisplayLink driver version 8.2.1999.0.

- Connect your laptop to the USB 3.0 Type-B input port on the CONVERGE Huddle.



For more detailed information about CONVERGE Huddle, Ceiling Mic Array, and UNITE 150 products, please refer to the appropriate quick-start guide on the ClearOne website:

www.clearone.com