

ClearOne®

Bluetooth Expander for CONVERGE Products

Quick-Start Guide v1.1



TABLE OF CONTENTS

TABLE OF CONTENTS	2
IMPORTANT SAFETY INFORMATION	3
BLUETOOTH EXPANDER FOR CONVERGE PRODUCTS	4
UNPACKING	5
MOUNTING AND INSTALLATION.....	7
POWER	9
CONTROLS AND CONNECTIONS	10
CONNECTION AND CONFIGURATION TO HARDWARE	11
CONVERGE® Huddle	11
CONVERGE Pro 2.....	12
BLUETOOTH PAIRING.....	12
BLUETOOTH SECURE LOCK-OUT MODE	13
COMPLIANCE	14
ClearOne Contacts	14

IMPORTANT SAFETY INFORMATION

Read all safety information before using this product.

1. Read and follow all instructions.
2. Keep these instructions.
3. Do not use this apparatus near water.
4. Clean only with dry cloth.
5. Do not block any ventilation openings. Install in accordance with the manufacturer's instructions.
6. Do not install near any heat sources such as radiators, heat registers, stoves, or other apparatus (including amplifiers) that produce heat.
7. Only use attachments/accessories specified by the manufacturer.
8. Refer all servicing to qualified service personnel. Servicing is required when the apparatus has been damaged in any way, such as liquid has been spilled or objects have fallen into the apparatus, the apparatus has been exposed to moisture, does not operate normally, or has been dropped.
9. Never push objects of any kind into this product through cabinet slots as they may touch dangerous voltage points or short out parts that could result in fire or electric shock.
10. This product can interfere with electrical equipment such as tape recorders, TV sets, radios, computers and microwave ovens if placed in close proximity.
11. Class 2 Wiring IS REQUIRED for these devices. Wiring and install should only be performed by qualified personnel.
12. For CONVERGE Pro 2 products that include a telephone circuit, Underwriters Laboratories (UL) requires these safety notifications:

BLUETOOTH EXPANDER

WARNING:

TO PREVENT FIRE OR ELECTRICAL SHOCK HAZARD, DO NOT EXPOSE THIS PRODUCT TO RAIN OR MOISTURE.



THE LIGHTNING FLASH AND ARROWHEAD WITHIN THE TRIANGLE IS A WARNING SIGN ALERTING YOU OF DANGEROUS VOLTAGE INSIDE THE PRODUCT.

CAUTION

**RISK OF ELECTRIC SHOCK
DO NOT OPEN
AVIS RISQUE DU CHOC ELECTRIQUE
- NE PAS OUVRI**

CAUTION: TO REDUCE THE RISK OF ELECTRIC SHOCK, DO NOT REMOVE COVER (OR BACK) NO USER SERVICEABLE PARTS INSIDE. REFER SERVICING TO QUALIFIED SERVICE PERSONNEL.



THE EXCLAMATION POINT WITHIN THE TRIANGLE IS A WARNING SIGN ALERTING YOU OF IMPORTANT INSTRUCTIONS ACCOMPANYING THE PRODUCT.

SEE MARKING ON BOTTOM/BACK OF PRODUCT



Use only in non-tropical locations.



Use only at altitudes of 2000 meters or less.

BLUETOOTH EXPANDER FOR CONVERGE PRODUCTS

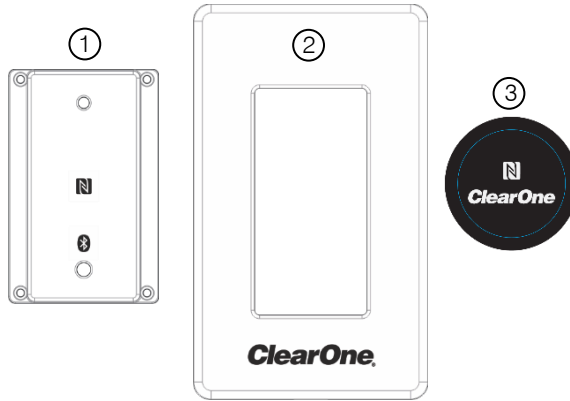
The Bluetooth Expander for CONVERGE Products (BT EX) provides high quality and low latency stereo audio through wireless connectivity between Bluetooth-enabled devices (e.g. smart phones, tablets, laptops, etc.) and the CONVERGE Huddle and CONVERGE Pro 2 (CP2) products. This connection allows you to transmit and receive wireless audio.

UNPACKING

Use the illustrations below to verify that you have received all components. ClearOne is not responsible for product damage incurred during shipment. Inspect your shipment carefully for obvious signs of damage. If the shipment appears damaged, retain original boxes and packing material for inspection by the carrier, and contact them immediately.

BLUETOOTH EXPANDER

The following items are included with your Bluetooth Expander unit:



Item No.	Description
1	Unit with face plate
2	Trim plate
3	2x NFC pairing buttons
4	Mounting screws (2x #6 x 3/4", not shown)

MOUNTING AND INSTALLATION

The BT EX fits in a standard national electrical code (NEC) 1-gang electrical box or a low-voltage mounting bracket. If the drywall for the room in which you want to mount the Bluetooth expander has not yet been hung, you may use a standard NEC 1-gang electrical box (if you have access to one). If drywall has been hung or you do not have access to a standard NEC 1-gang electrical box, you may use a low-voltage mounting bracket.

If you choose the low-voltage mounting bracket, you need the following materials:

- Level
- Pencil
- Ruler
- Drywall saw
- Screwdriver

To install the mounting bracket, perform the following steps.

1. Place the bracket in the location on the drywall where you want to mount it.
2. Use the level to ensure that the bracket is plumb.
3. Mark the bracket with the four marking holes. See Figure 1.

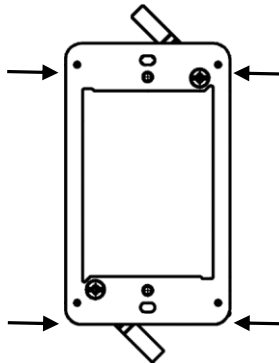


Figure 1. Mounting bracket marker holes

BLUETOOTH EXPANDER

4. Connect the dots using the ruler and pencil.

NOTE: Sawing on the push stroke helps eliminate dust, as it will mostly fall into the wall cavity. Also, it will cause less tearing of the paper face of the drywall (if it has not already been painted)

5. Cut the drywall on the lines created in step 4.
6. Insert the mounting bracket into the hole.
7. Verify that the bracket is level.
8. Retrieve the ethernet cable from inside the wall cavity. Let it dangle outside the mounting bracket.

WARNING: Over-tightening the clamp screws will cause the drywall to crumble.

9. Tighten both screws until the swing clamp is snug against the back of the drywall.
10. Attach the Ethernet cable to the back side port of the Bluetooth expander.
11. Align the screw holes on the Bluetooth expander with the holes on the mounting bracket.
12. Attach the Bluetooth expander to the mounting bracket using the two screws.
13. Attach the Bluetooth expander faceplate.

If drywall has not been installed and you would like to install the Bluetooth expander to a 1-gang electrical box, perform the following steps.

1. Remove a wire tab from the back side of the gang box.
2. Feed the ethernet cable through the back side of the gang box
3. Place gang box on stud where you want it to hang.
4. Using a spare piece of drywall, ensure that the gang box is flush with the drywall. This ensures a level, flush installation.

NOTE: The electrical box needs to be at least 2.5 inches deep to accommodate the RJ-45 connector and CAT-5 or greater cable's bend radius

5. Nail the gang box to the 2 x 4.
6. Attach the Ethernet cable to the back side port of the Bluetooth expander.
7. Align the screw holes on the Bluetooth expander with the holes on the 1-gang electrical box.
8. Attach the Bluetooth expander to the 1-gang electrical box using the two screws.
9. Attach the Bluetooth expander faceplate.

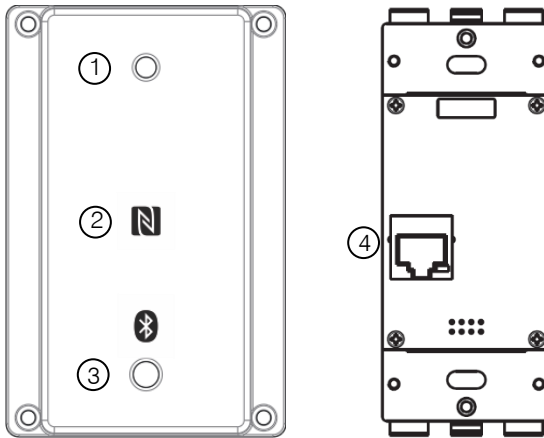
POWER

The BT EX is powered by the P-Link In connection. It cannot utilize a Power over Ethernet (PoE) injector directly into the Ethernet port; it requires either an in-line PoE injector or an injector connected to the CP2 or CONVERGE Huddle.

BLUETOOTH EXPANDER

CONTROLS AND CONNECTIONS

Refer to the following diagram and descriptions for the BT EX.



Item No.	Description
1	LED Status Indicator: Indicates the status of the BT EX. <ul style="list-style-type: none">• Blinking blue: ready to pair• Solid blue: paired• Red/purple: unpairing from current device• Solid red: lock-out—not discoverable by devices and cannot pair
2	NFC logo (indicates position of NFC tag): Allows Near-Field Communication (NFC) devices to connect directly to the BT EX.
3	Reset/Pairing/Lock-out Button: Disconnects current device if one is attached. Sets the BT EX to “discoverable” by other Bluetooth devices. Locks out Bluetooth Expander from being discoverable by other Bluetooth devices.
4	P-Link Port: Used to connect to the P-Link chain. The BT EX must be the last device on the chain.

CONNECTION AND CONFIGURATION TO HARDWARE

The BT EX is usable straight out of the box, but you can modify the configuration using Console AI, if necessary.

The following settings are common to the CONVERGE® Huddle and CP2.

- Default channel parameters
 - Mute: disabled
 - Gain: 0 dB
- Default channel labels
 - BT_L_Rx
 - BT_R_Rx
 - BT_Tx
- Default BT EX pair name: ClearOne Bluetooth XXXX, where XXXX are the last 4 digits of the MAC address.

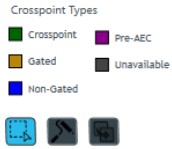
NOTE: The pair name can be changed from the default using Console AI.

CONVERGE® Huddle

The BT EX connects to the CONVERGE® Huddle by connecting to the expander port.

The default BT EX module configured through the CONVERGE® Huddle matrix is defined below.

BLUETOOTH EXPANDER



	Output1	Output2	BMA_CTH_Speaker1	BMA_CTH_Speaker2	Speaker1	Speaker2	USB_L_Ix	USB_R_Ix	Mobile_Ix	BT_Ix	ProcBlk1	ProcBlk2
Mic1							0	0	0	0		
Mic2							0	0	0	0		
Mic3							0	0	0	0		
LineInput	0	0	0	0	0	0	0	0	0	0		
BMA_CTH							0	0	0	0		
USB_L_Rx	0	0	0		0				0	0		
USB_R_Rx	0	0		0		0			0	0		
Mobile_L_Rx	0	0	0		0		0			0		
Mobile_R_Rx	0	0		0		0		0		0		
BT_L_Rx	0	0	0		0		0		0			
BT_R_Rx	0	0		0		0		0	0			
ProcBlk1												
ProcBlk2												

CONVERGE Pro 2

The CP2 can use the BT EX as a P-Link device. It must be the last device on the P-Link chain. Only one BT EX can be added per available P-Link.

BLUETOOTH PAIRING

In devices that have near-field communication (NFC) capabilities, tap the BT EX face plate with the NFC-capable device. This initiates a pairing between the device and the BT EX.

To pair a non-NFC device, perform the following steps.

1. Push the reset/pairing button on the front of the BT EX face plate. If the LED is blinking, then discovery is available.
 - A. If it is solid, press the button again to unpair it from the device with which it is currently paired. This places the Bluetooth Expander into “Locked” mode.
 - B. Press the button one more time places it back into “Discovery” mode.
2. In your Bluetooth-enabled device, navigate to your Bluetooth settings (e.g. for iOS users, Settings > Bluetooth).
3. Select “ClearOne Bluetooth XXXX” (XXXX indicates the last 4 digits of the MAC address or the new name configured in Console AI).

When a device is paired, a short beep plays followed by a higher frequency beep.

When a device is unpaired, a short beep plays followed by a lower frequency beep.

BLUETOOTH SECURE LOCK-OUT MODE

In the instances where security is important to your conversations, BT EX has security features that render it undetectable by other Bluetooth-enabled devices.

Secure lock-out mode clears the existing Bluetooth connection and prevents any new pairing to ensure that no one is unknowingly listening in.

- Press the button to toggle between a blinking blue LED pairing mode and a solid red LED lockout mode.
- If Bluetooth is paired when the button is pressed, the pairing will be cleared, and the LED will turn solid red.
- If the LED is solid red, it will not allow pairing, and Bluetooth Expander is not discoverable by a device.

BLUETOOTH EXPANDER

COMPLIANCE

Contains FCC ID: QQQWT32I

Contains IC: 5123A-BGTWT32I

Mic Japan: 209-J00089

KCC (South Korea): ID MSIP-CRM-BGT-WT32i

ClearOne Contacts

Headquarters

5225 Wiley Post Way
Suite 500
Salt Lake City, UT 84116

US & Canada

Tel: 801-975-7200
Toll free: 800-945-7730
Fax: 801-303-5711

International

Tel: 801-974-3621
e-mail: global@clearone.com

Sales

Tel: 801-975-7200
e-mail: sales@clearone.com

Tech Support

Tel: 801-974-3760
e-mail: tech.support@clearone.com

© 2019 ClearOne, Inc. All rights reserved - <http://www.clearone.com/>.

Information in this document is subject to change without notice. QSG-0082-001 v1.1 Nov 2019

ClearOne owns all rights to its logos and trademarks used in connection with this website. All other logos and trademarks appearing on the website are the property of their respective owners. Use of third-party logos or trademarks is for the sole informational purpose of identifying the referenced goods and/or services. Use of a third-party logo or trademark on this website does not necessarily indicate an endorsement by the owner of that mark or a partnership, affiliation, or sponsorship between the owner and ClearOne.

In a time of rapid change, it is difficult to ensure that all information on this website is accurate and up-to-date. The content on this website is for informational purposes only and is subject to change without notice.