

ClearOne®

CHAT® 170 | CHATAttach® 170

Group Speakerphone

Groupe de Haut-Parleur de Téléphone

Freisprecheinrichtung für Gruppen

Quick Start Guide

Guide de Démarrage Rapide

Anleitung



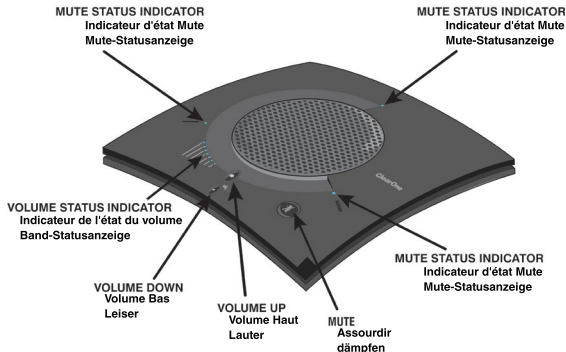
TABLE OF CONTENTS

CHAT 170 FEATURES	1
CONNECTING THE CHAT 170 TO A PC.....	2
Setup.....	2
CHATATTACH®: CONNECTING TWO CHAT DEVICES	3
SPECIFICATIONS AND REQUIREMENTS.....	4
System Requirements.....	4
Connections	4
Audio.....	4
Power	4
Controls	4
Environmental.....	4
Processing.....	4
Mechanical.....	4
Compliance.....	4
Model Numbers	4
USING THE CHAT 170 WITH LYNC SERVER	5

CHAT 170 FEATURES

CHAT 170 Caractéristiques

CHAT 170 Funktionen



Important! CHAT devices are designed to work on flat, stable surfaces with no obstructions. For best results, do not hold or move the device while in use.

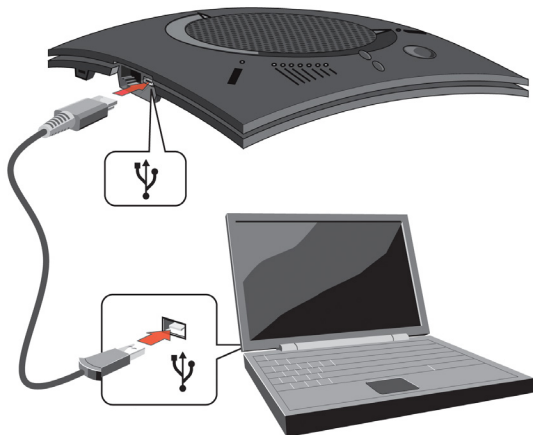
CONNECTING THE CHAT 170 TO A PC

Connexion de l'CHAT 170 à votre ordinateur

Schließen Sie das CHAT 170 an Ihren Computer an

SETUP

Installation



CHATATTACH®: CONNECTING TWO CHAT DEVICES

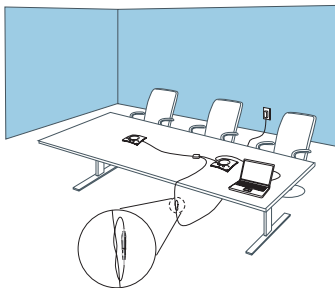
CHATAttach: Connexion de deux l'CHAT appareils

CHATAttach: Verbinden von zwei CHAT Geräten

The CHATAttach accessory allows two CHAT 170 devices to be connected together for use in larger conference settings.

Certain restrictions and requirements must be met in order to use the CHATAttach accessory. For a complete list and detailed instructions, consult the CHATAttach User's Manual.

1. Attach the specially keyed CHATAttach cable to both CHAT 170 devices.
2. Plug the power supply into the power source.
3. Connect the female/male ends of the power cable together.
4. Place the CHAT 170 units at least 5' apart.



Specifications and Requirements

System Requirements

Microsoft Windows XP, Vista or 7

Connections

USB:

2.0 Compatible, Type: Mini-B Female

Keyed: RJ-45 (8-conductor)

Audio

Speaker

Bandwidth: 190 Hz – 20 kHz

Maximum Output Level:

85 dB SPL @ 1 foot (0.30 meter)

Microphone(s)

Bandwidth: 50Hz – 7.75 kHz

Power

USB:

5 VDC @ 500mA Maximum

External:

Input: 100 - 240 VAC

Output: 9 VDC @ 560 mA

Tip: Power, Ring: Ground

Controls

Volume Up

Volume Down

Microphone Mute

Environmental

Operating Temperature:

41 - 104° F (5 - 40° C)

Processing

Full Duplex

Distributed Echo Cancellation

(D. E. C.)®

Noise Cancellation (NC)

Automatic Level Control (ALC)

First Mic Priority

Mechanical

Dimensions (W x D x H):

7.4" x 7.4" x 1.8"

(18.8 cm x 18.8 cm x 4.6 cm)

Weight: 1.17 lbs (0.53 kg)

Compliance

RoHS

REACH

FCC Class A Part 15

ICES-003

CE Listed

UL Listed

Model Numbers

910-156-256 CHAT 170

910-156-256-00 CHATAAttach 170

USING THE CHAT 170 WITH LYNC SERVER

En Utilisant le CHAT 170 avec Lync Server

Verwendung von CHAT 170 mit Lync Server

Software updates and product information for the CHAT 170 are available at:

Mises à jour de logiciels et informations sur les produits pour le CHAT 170 sont disponibles à:

Software-updates und Produktinformationen für das CHAT 170 erhalten Sie unter:

<http://CHAT170.ClearOne.com>

Microsoft Lync Server 2010 information is available at:

l'information est disponible à:

Informationen sind verfügbar unter:

<http://www.microsoft.com/en-us/lync/default.aspx>